

Installation Guide

for

nxDSMP

(Master/User Installation)

Release 9.0.027



AUGUST 18, 2010

THE INFORMATION CONTAINED IN THIS DOCUMENT IS THE EXCLUSIVE PROPERTY OF AND IS PROPRIETARY TO NET-LINX.
THIS MATERIAL MAY NOT IN WHOLE OR IN PART BE USED WITHOUT THE PRIOR WRITTEN CONSENT OF NET-LINX.

COPYRIGHT © 2011 BY NET-LINX ALL RIGHTS RESERVED.

TABLE OF CONTENT

- Installation Guide 3**
- Master - User Installation 3
- Stand-Alone Installation 4
- Dialog Flow nxDSMPMaster Installation 5
- Dialog Flow nxDSMPUser Installation 13
- Remove nxDSMPMaster/User Installation 24
- Font Directory in nxDSMP 24
- Preview Functionality 24
- Online Help Files..... 24
- ICE with nxDSMP 25

INSTALLATION GUIDE

The following guide describes the installation procedure for:

- a) Local installations. nxDSMPMaster and nxDSMPUser part both reside on all client PC's. See "stand-alone Installation".
- b) "Network installation of the nxDSMPMaster part (with the option to distribute the nxDSMPUser part more efficiently to a high number of clients by Administrator). The installation is to be made on a reference PC. The installation of the nxDSMPMaster part is made to a mapped network share (NTFS file system, no server required). The server part of the installation can be made read-only for public use, however read-write access is required for the ICE part being integrated in the nxDSMP installer.
- c) The installation on Citrix Server (The installation must be performed in Installation-Mode with Add-Remove programs; i.e. not by double-click on the installer provided. This is to ensure that all Citrix users have the installation available under the Execution-Mode). In theory a Citrix installation could be made in combination with option b), however this is not recommended in order to use the speed of adequately sized Citrix-Servers, instead of being limited by network traffic.

General Hints

1. During the installation process local administrator rights are required.
2. Highly recommended is, not to install on a commonly known and suggested installation path such as **C:\Program Files** for several reasons.

A Microsoft or company policy may exist that such a directory is to be read-only. See above note about read-write access for ICE. A path containing spaces is not supported by all executables.

The nxDSMP setup instructions include two parts, nxDSMPMaster installation and nxDSMPUser installation. To install nxDSMP run first the nxDSMPMaster installation and then the nxDSMPUser part of installation.

You can use the nxDSMP setup in two ways. You can use it to install nxDSMP on two or more machines (one master machine and one or more user machines). Or you can also use it to install nxDSMP on a stand-alone machine.

Master - User Installation

For the installation of nxDSMPMaster and nxDSMPUser parts on different machines, create on your master machine the destination folder for the files, which will be installed with the nxDSMPMaster installation (e.g. **C:\net-linx\nxDSMP**).

Share the folder **net-linx**.

Run the nxDSMPmasterInstallerx.x.xxx.exe from the CD root and follow the instructions given by the nxDSMPMaster installation process. See the dialog flow for the nxDSMPMaster installation below.

Create on your user machine the destination folder for the files, which will be installed with the nxDSMPUser installation (e.g. **C:\net-linx\nxDSMP**).

Run the nxDSMPuserInstallerx.x.xxx.exe from the CD root and follow the instructions given by the nxDSMPUser installation process. See the dialog flow for the nxDSMPUser installation below.

If you have a pool of identical user machines, use a reference PC to install the nxDSMPUser part. After the installation process copy the created output structure (e.g. C:\net-linx\nxDSMP) and the new created shortcut nxDSMPx.x.xxx_EnvironmentName from ...\\All Users\Desktop to the identical location on all user machines.

Stand-Alone Installation

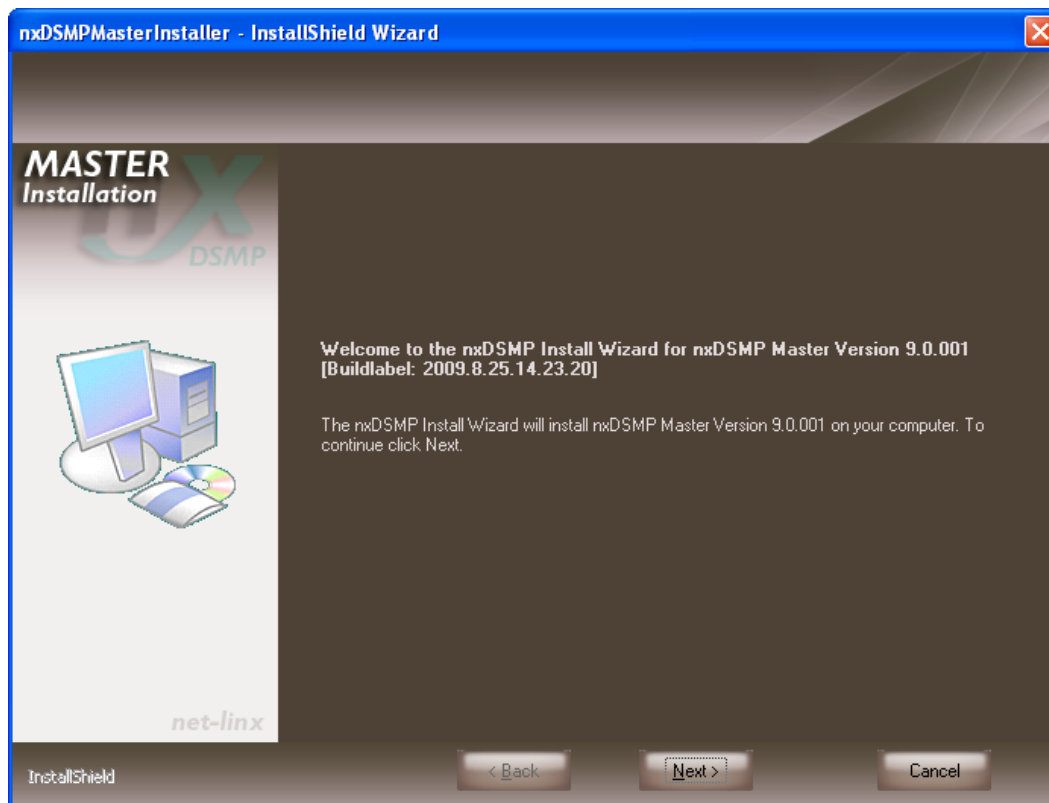
For the installation of nxDSMPMaster and nxDSMPUser parts on a stand-alone machine, Run the nxDSMPmasterInstallerx.x.xxx.exe from the CD root and follow the instructions given by the nxDSMPMaster installation process. See the dialog flow for the nxDSMPMaster installation below.

Run the nxDSMPuserInstallerx.x.xxx.exe from the CD root and follow the instructions given by the nxDSMPUser installation process. See the dialog flow for the nxDSMPUser installation below.

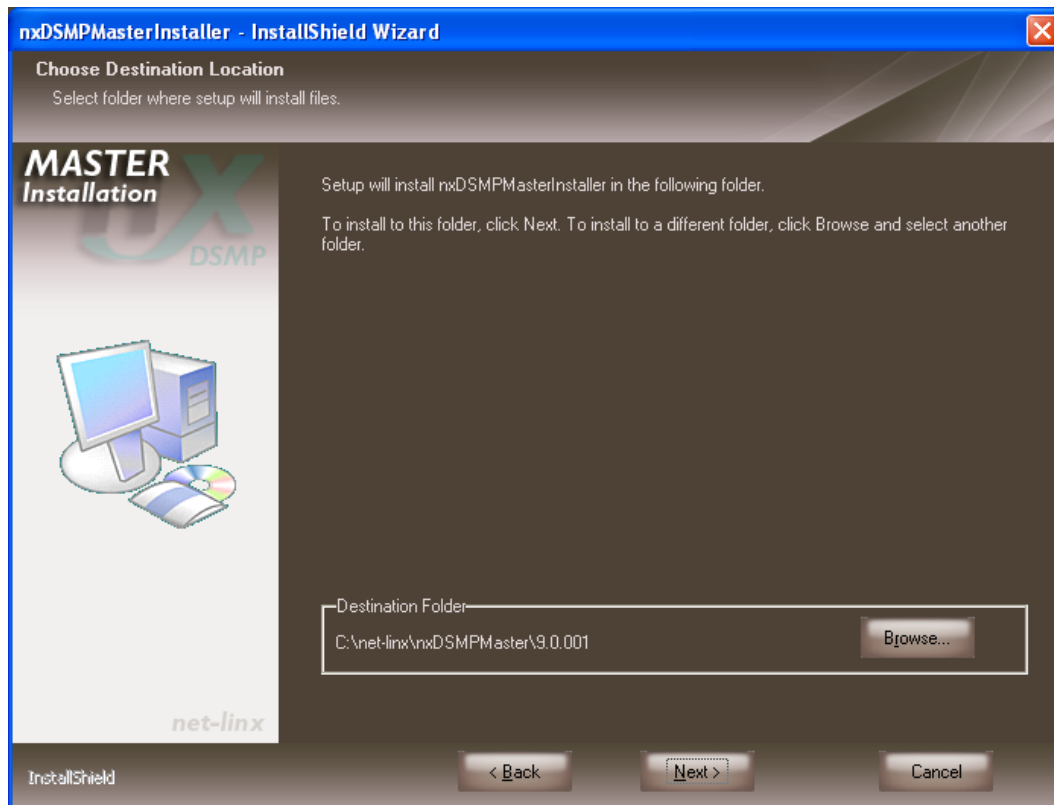
Dialog Flow nxDSMPMaster Installation

Double click on nxDSMPMasterInstaller.exe

You will receive the following welcome screen.

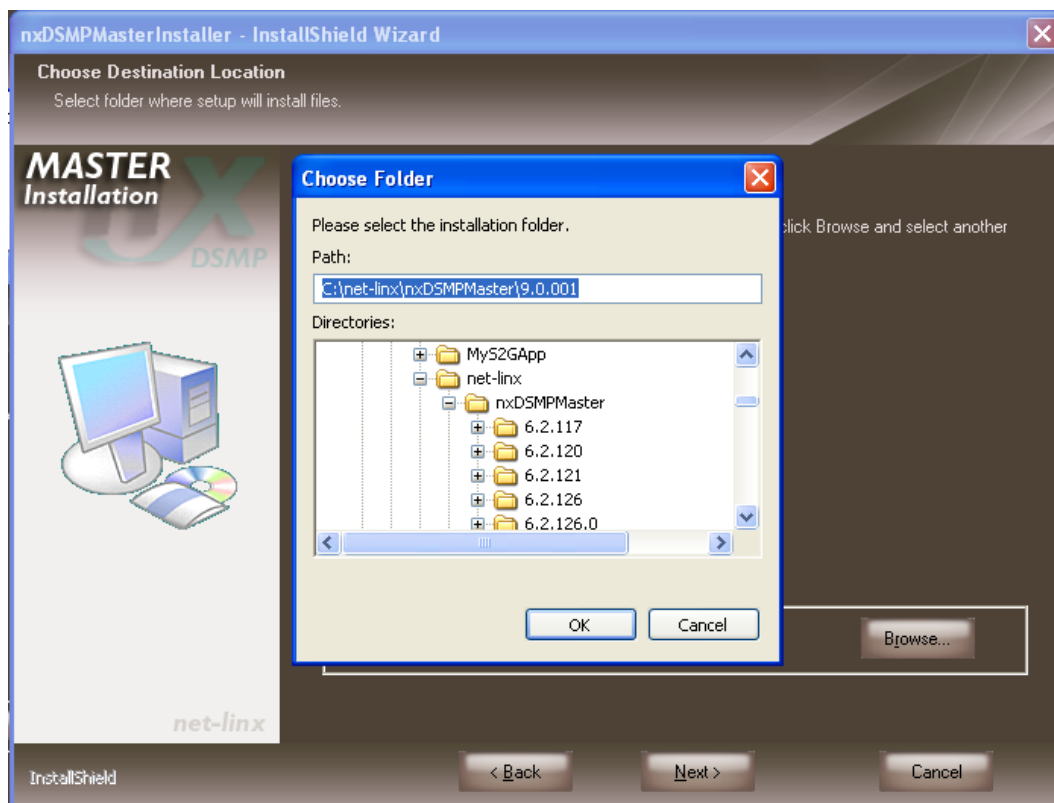


Click on button Next.



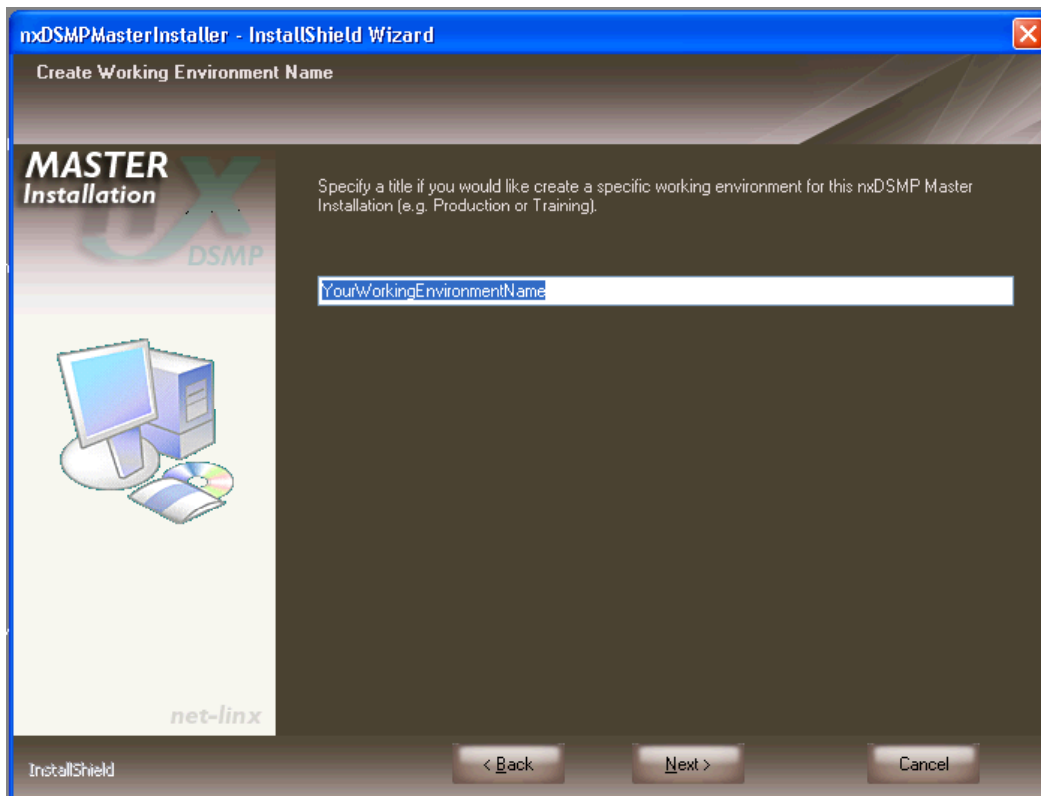
Either choose a different Destination Folder than proposed by click on button Browse or click on button Next.

If you decided to choose a different Destination Folder the following screen appears:



Pls. select your desired new Destination Folder and click OK.

Click on button Next. The following screen will appear.



The user is able to define the name of the working environment for this installation, e.g. Production, Testing, Training, etc. You may write Production and click button Next.



Here you need to decide whether you want to use an existing DSAccess.ini file or if you want to create a new file later once you are finished with the Installation.

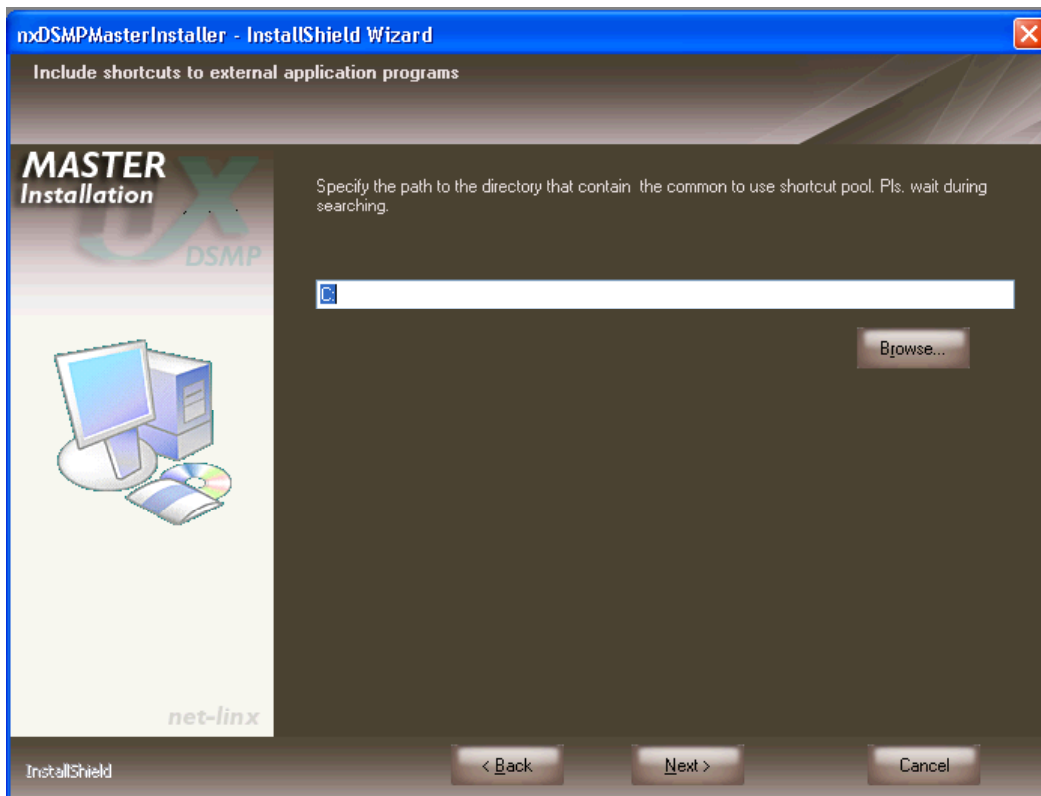
In case you select "Find an existing DSAccess.ini" and then click button Next you will get to the following screen.



Pls select the location of your existing DSAccess.ini file. The file is either stored on your local PC or on a Network Drive. Once you located the file click on button Open. Then the following screen will appear.



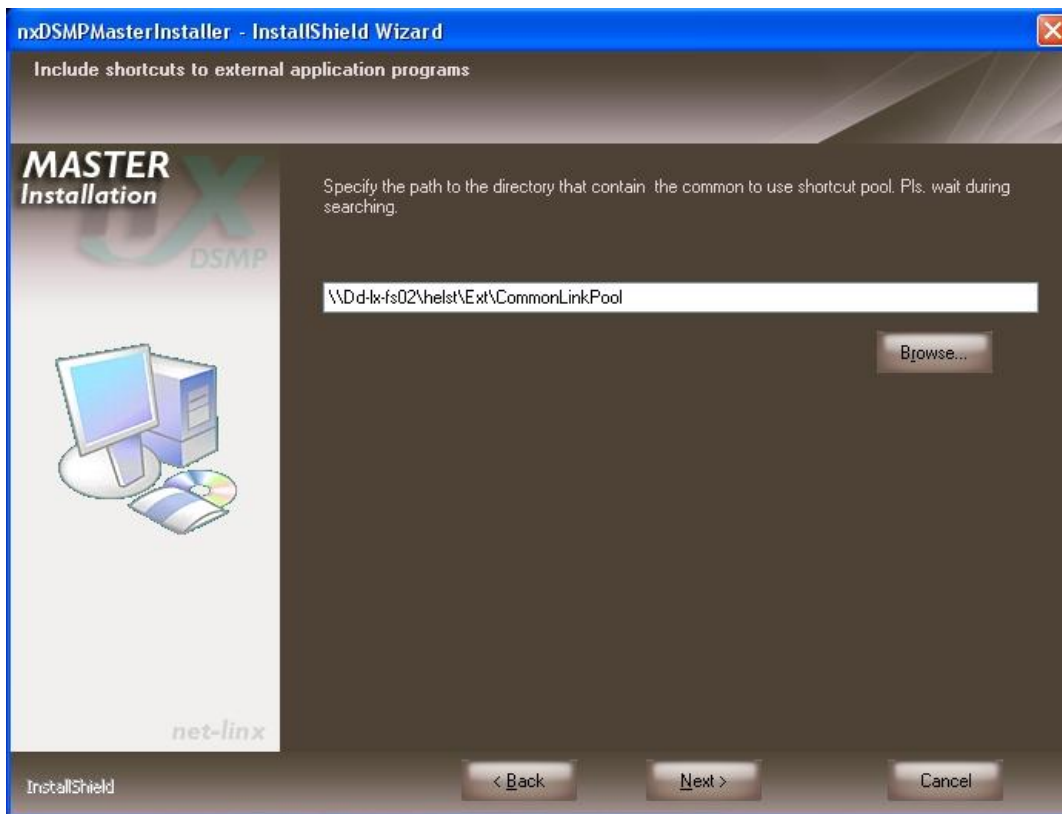
From nxDSMP you can launch external software applications. At this point the user is able to determine what are the common external software applications to be launched by all users of nxDSMP. If you click on radio button Yes and button Next the following screen will be presented:



By clicking on button Browse you can select a folder which included the links (*.lnk, *.url) of external software applications and internet shortcuts.



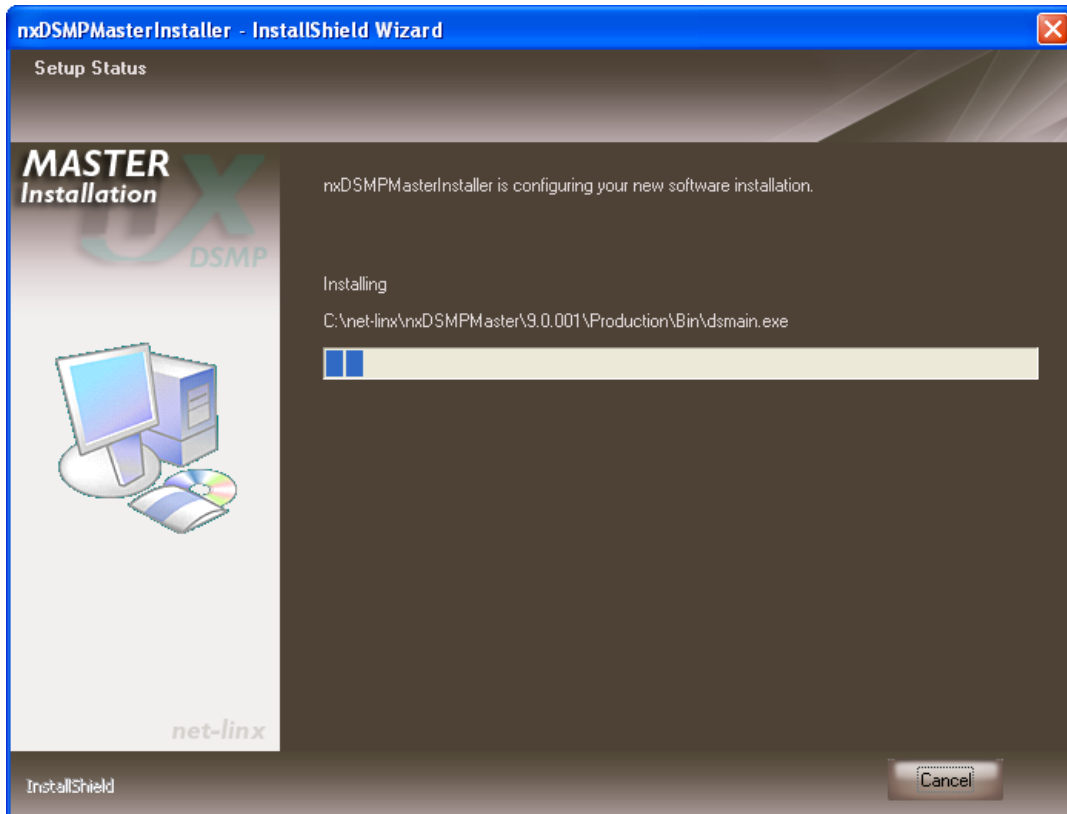
Select the folder and click on button OK. The path to the location of the chosen folder will appear.



To continue click button Next.

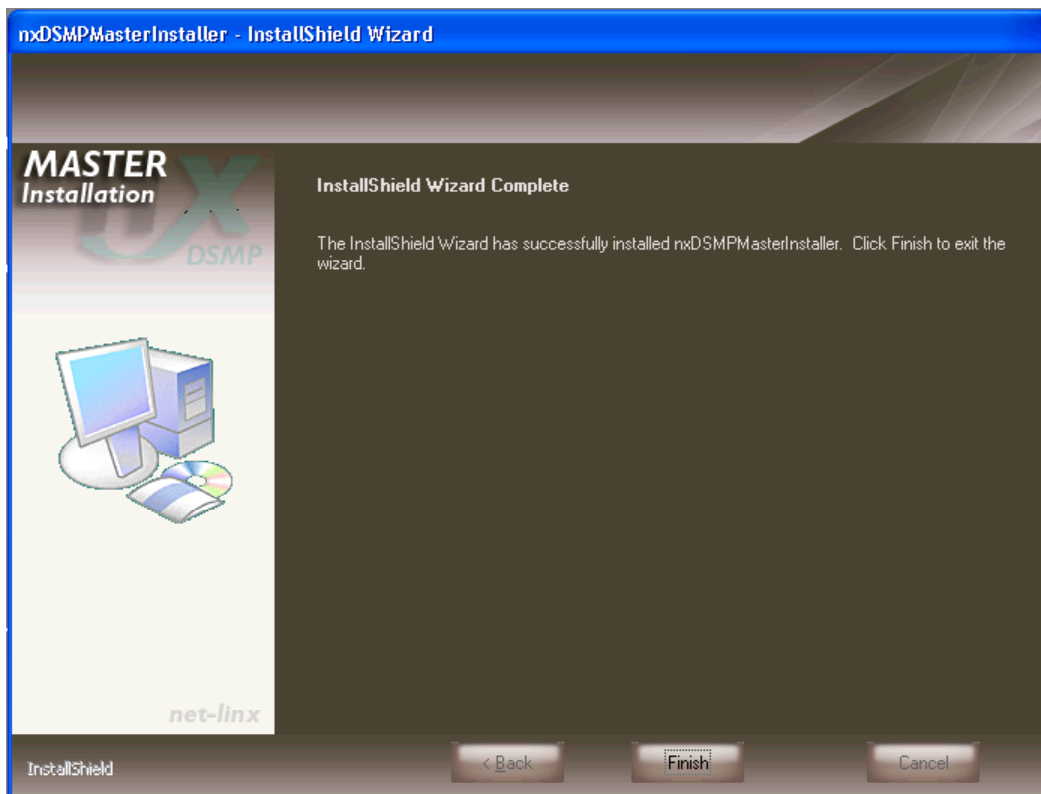


This screen shows you the current settings you have chosen. You can either go backwards by click on button Back to modify your Current Settings or continue with the server installation by click on button Next.



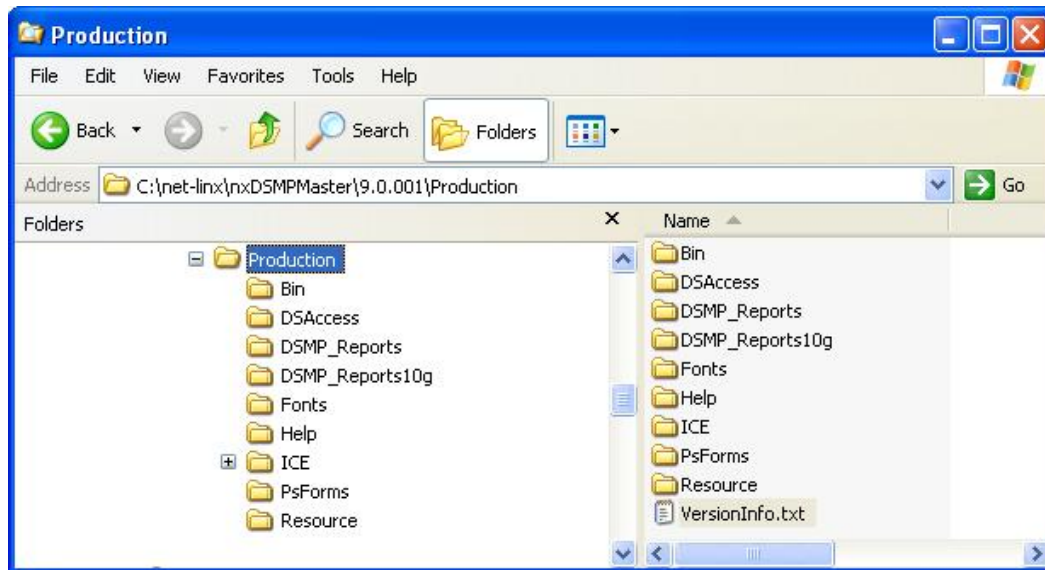
The installation is progressing.

When the server installation is complete the following screen will be shown.



By click on button Finish you confirm that the server installation shall be completed.

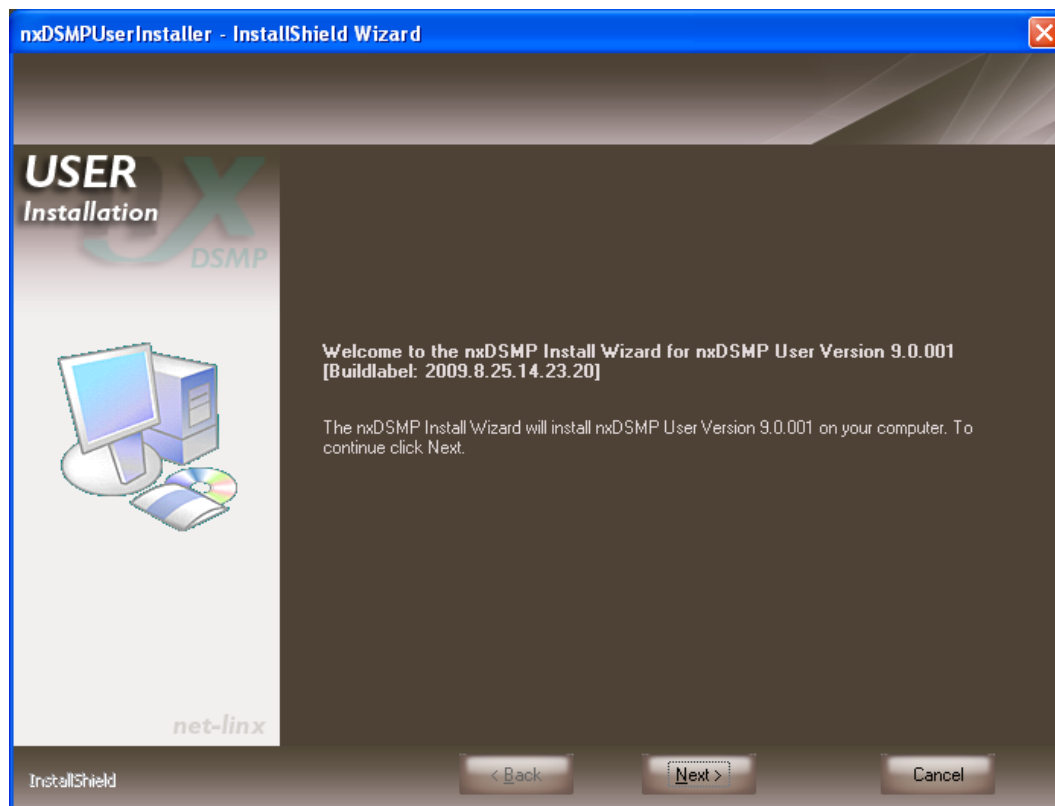
The result of your installation will look like this:



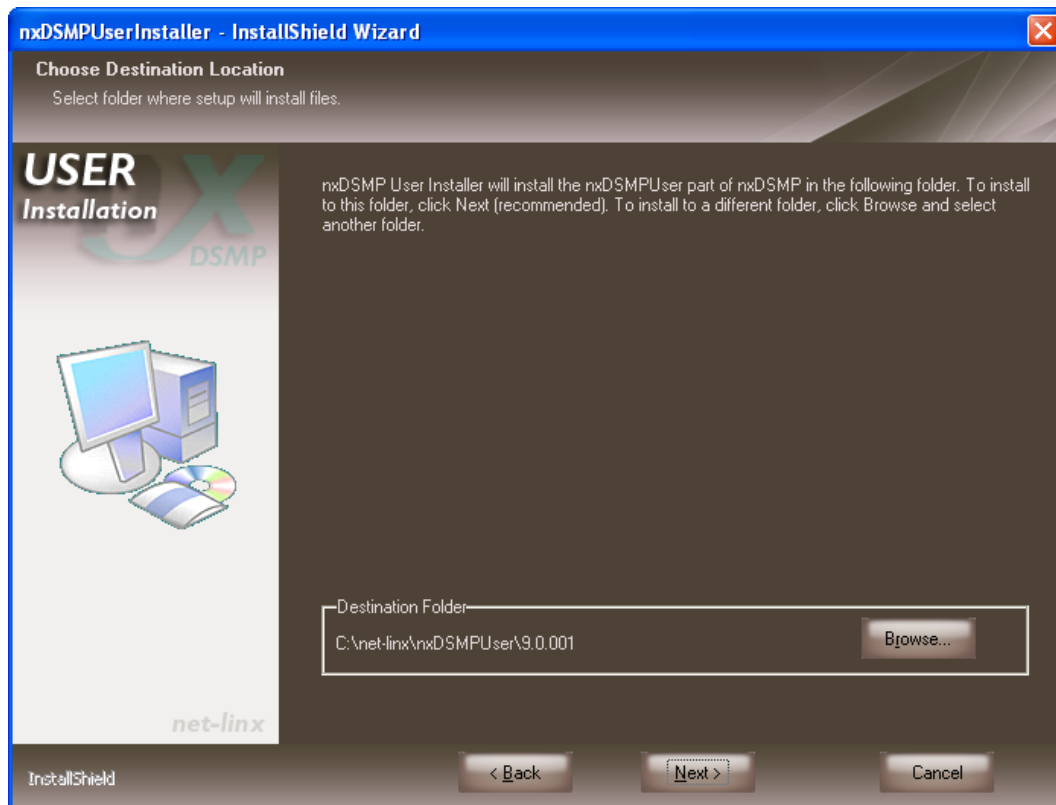
Dialog Flow nxDSMPUser Installation

Double click on nxDSMPUserInstaller.exe

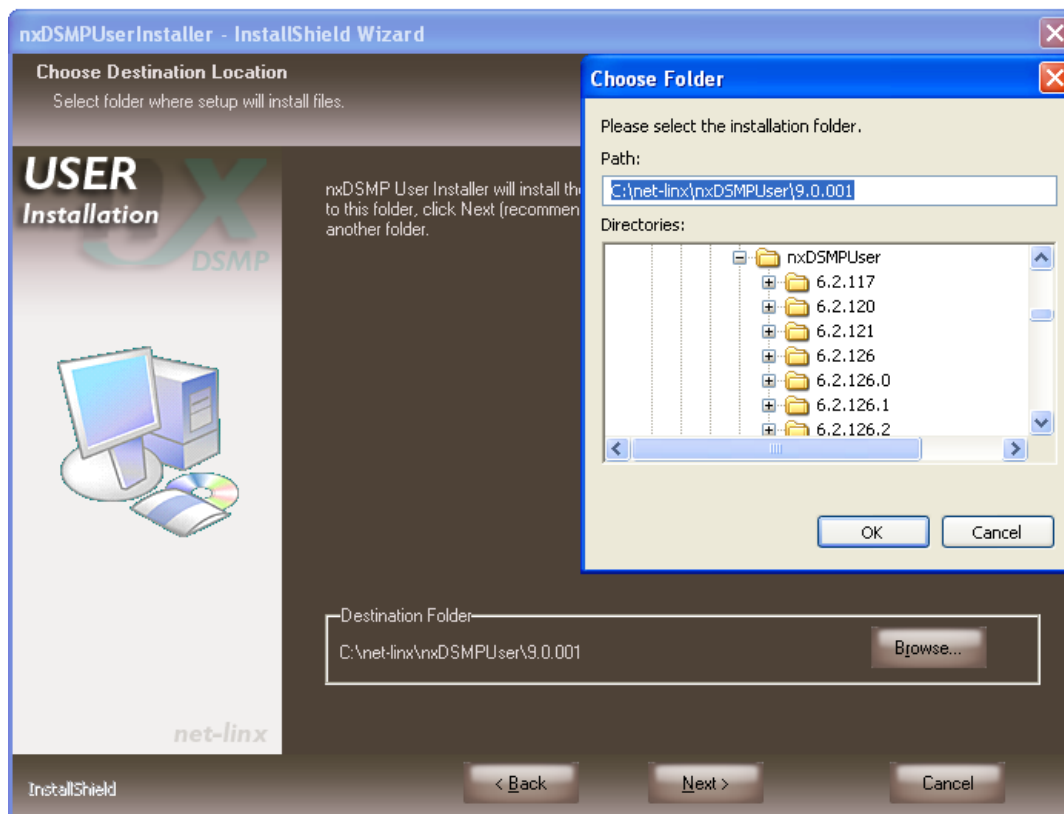
You will receive the following welcome screen.



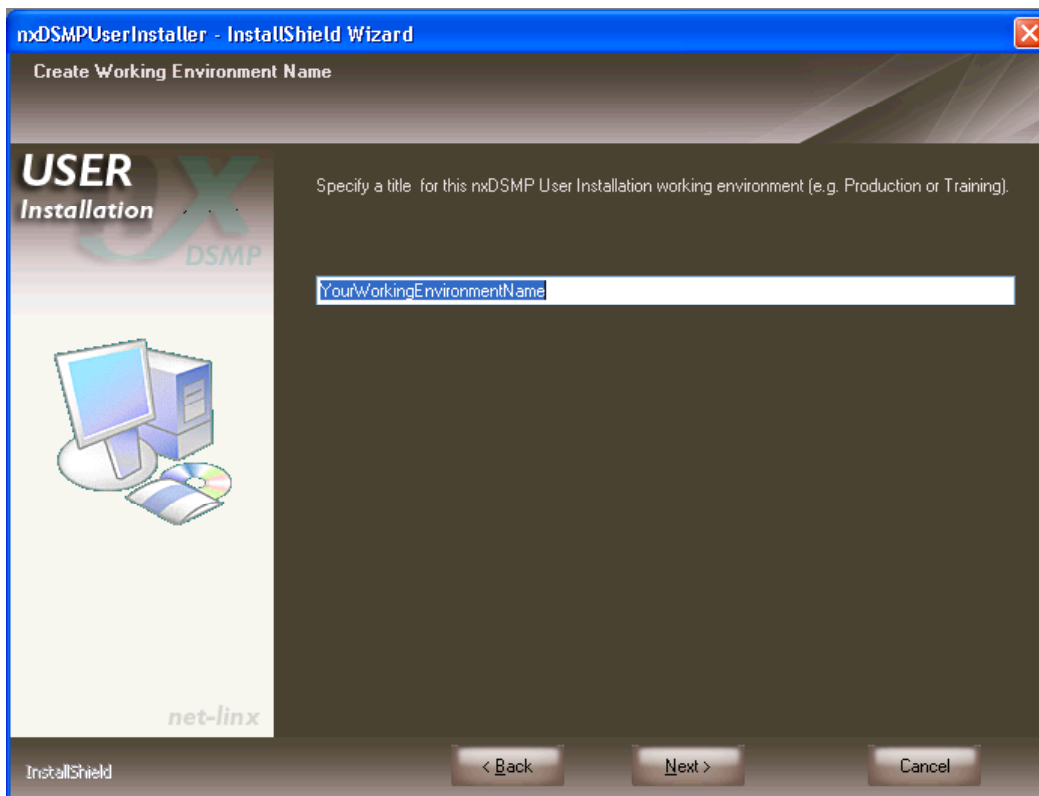
Continue by click on button Next.



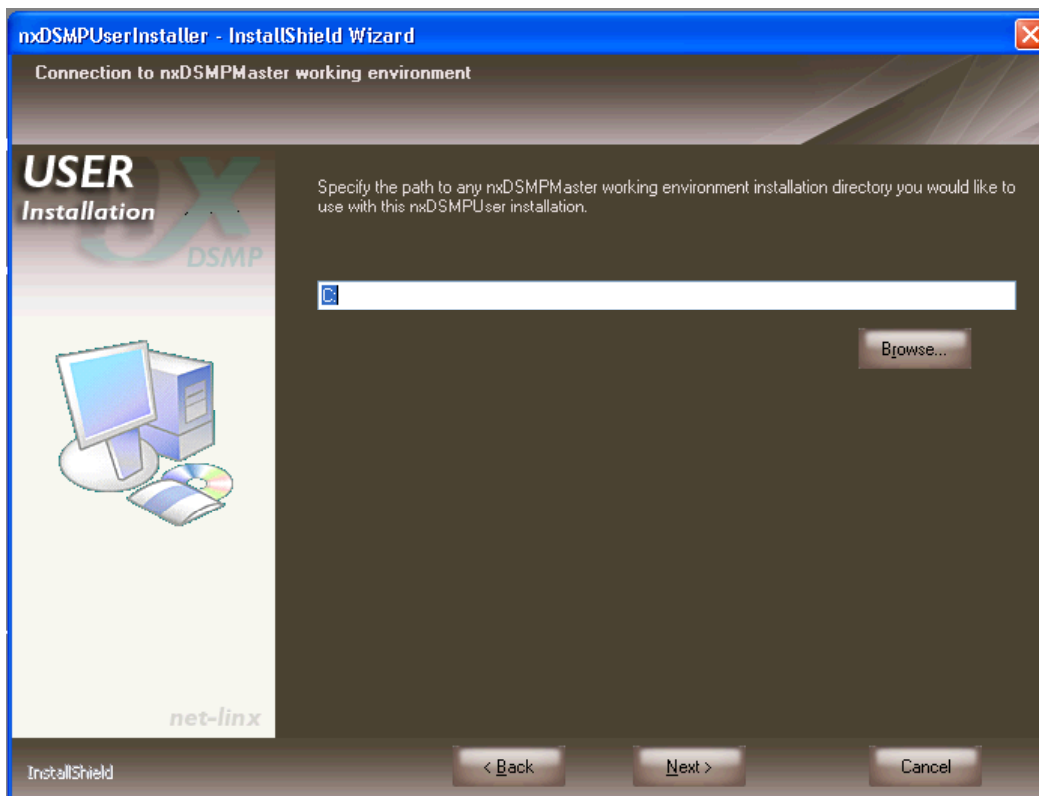
Either choose a different Destination Folder than proposed by click on button Browse or click on button Next.



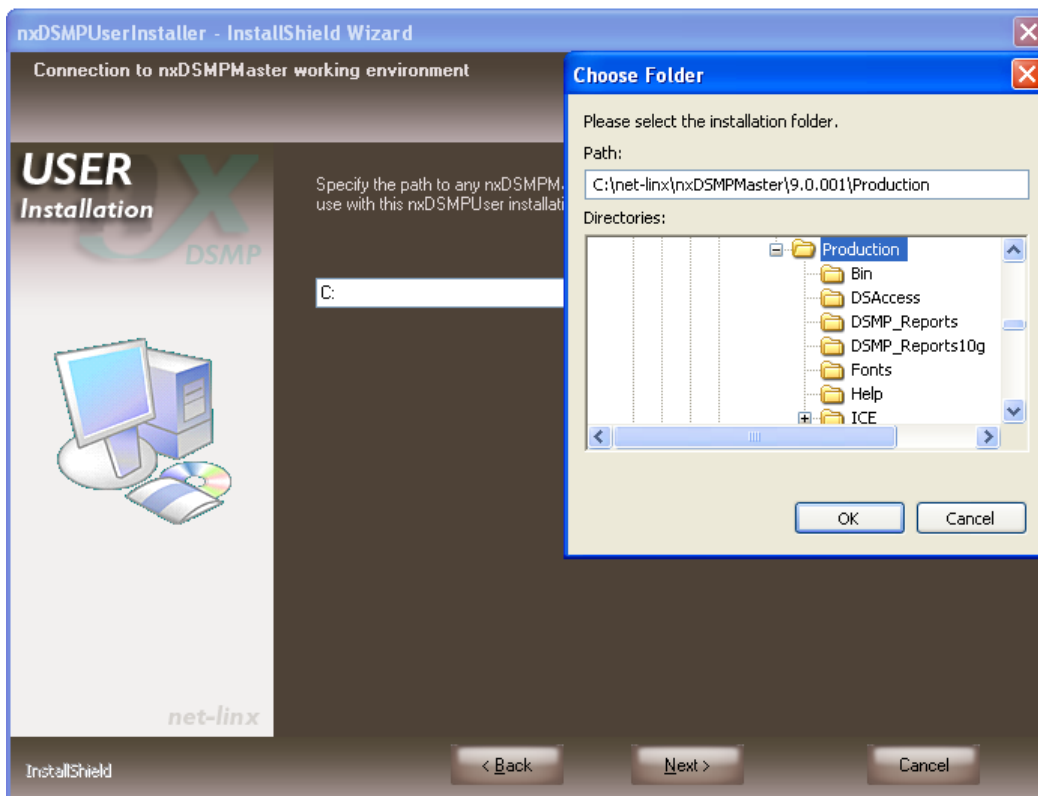
Pls. select your desired new Destination Folder and click OK. Click on button Next. The following screen will appear.



The user is able to define the name of the working environment for this user installation, e.g. Production, Testing, Training, etc. You may write Production and click button Next.

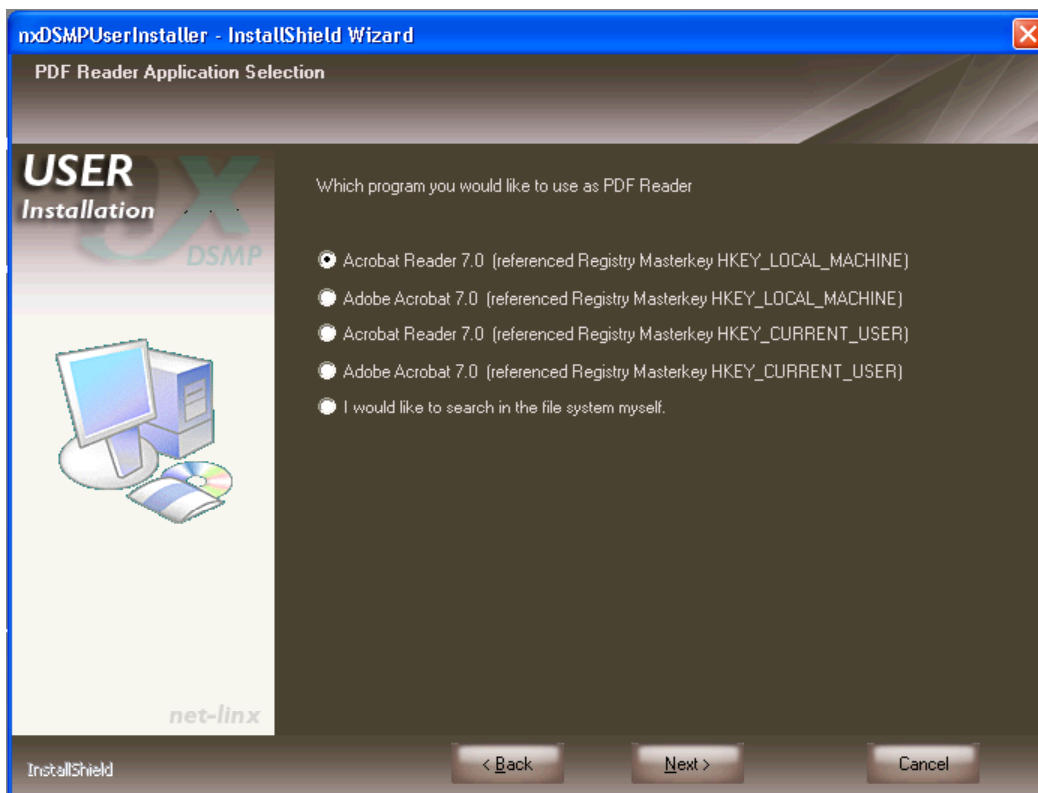


The user should now specify the location for the server part of the installation. Click on button Browse to locate the folder which contains the server part of the installation.



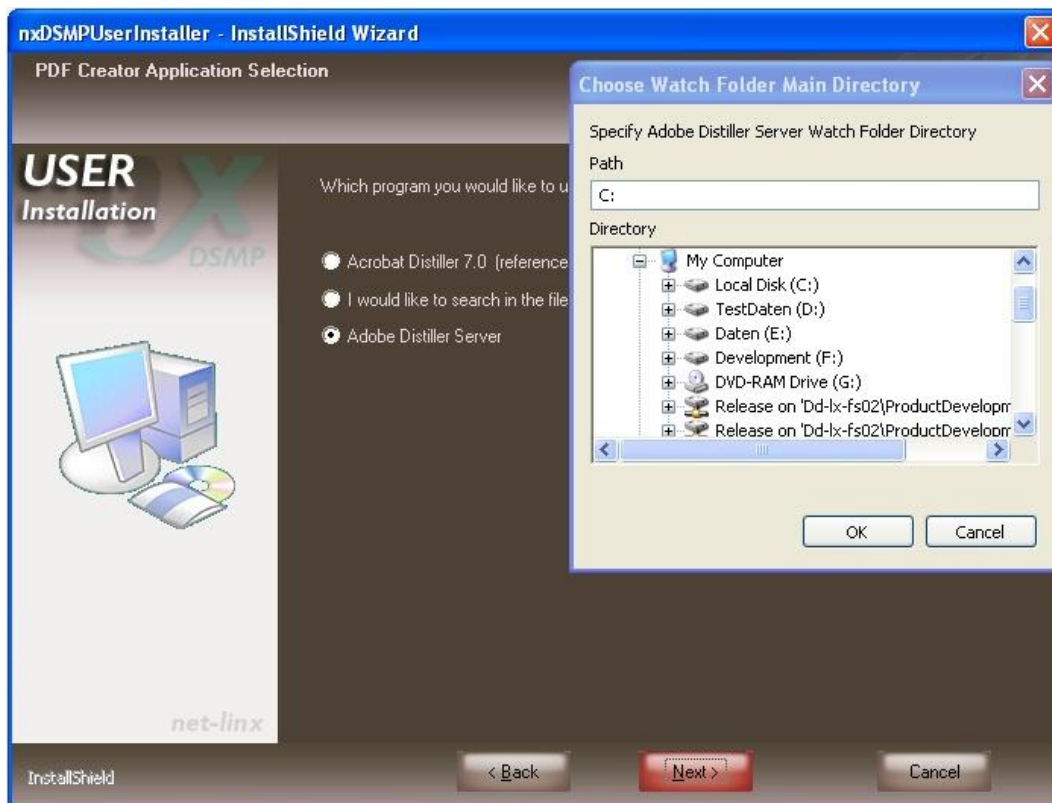
Click on button OK and continue installation with click on button Next.

The following screen shows you what PDF Reader applications can be chosen:



Select an application and continue with button Next.

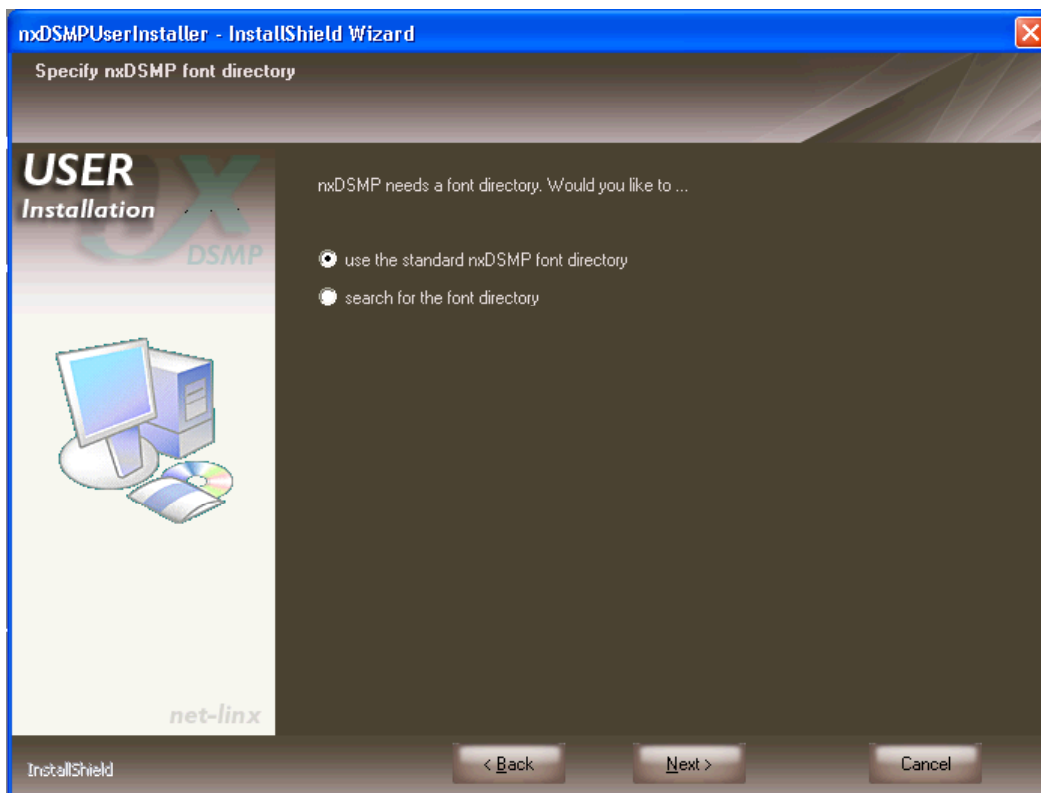
The following screen shows you what PDF Creator applications can be chosen:



Select an application and continue with button Next. If Adobe Distiller Server selected a windows to specify the Adobe Distiller Server watch folder directory will appear.

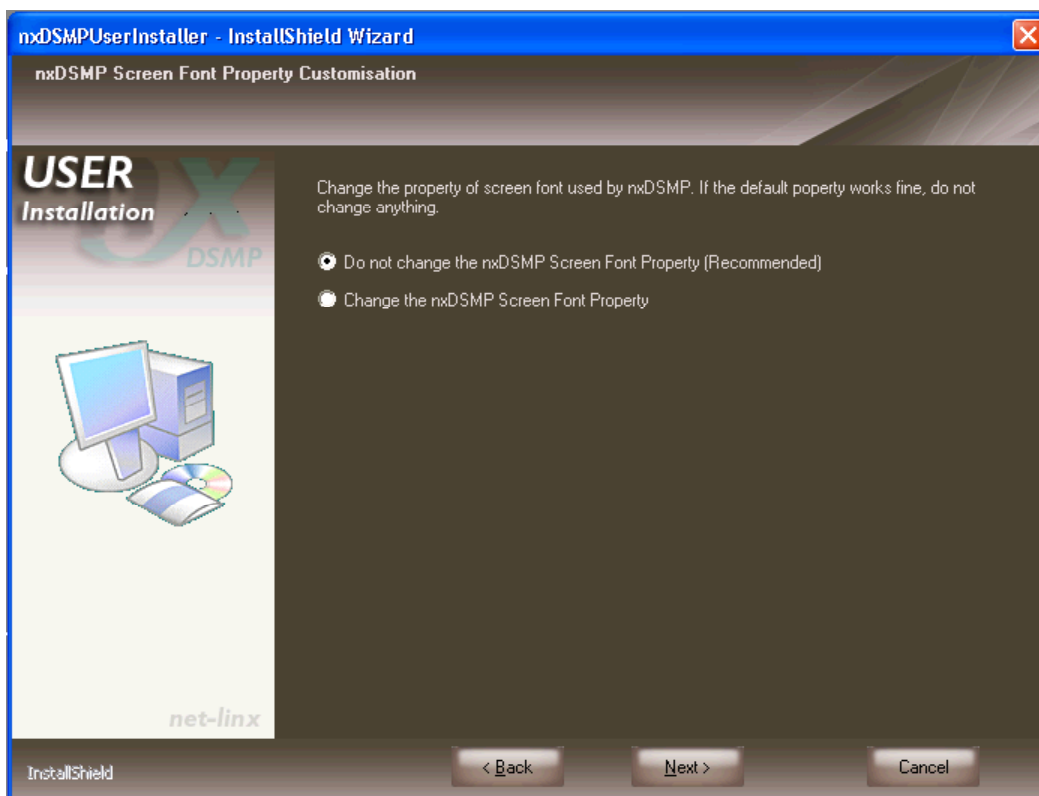
Select the directory and continue by click on button OK.

This screen asks the user to determine the location of the Font directory.



You can choose between the standard nxDSMP Font directory or search for a Font directory located on your local PC or on the Network.

Then the following screen will appear.

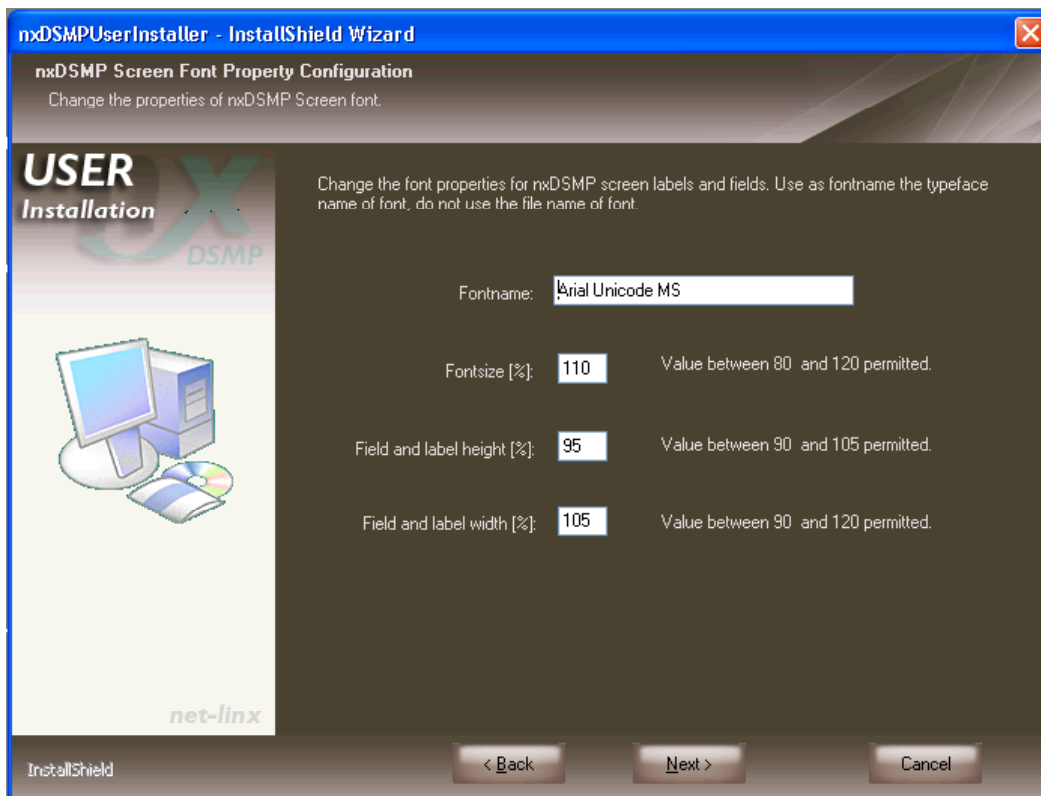


The user can now decide if the nxDSMP Screen Font Properties shall be used or if the standard nxDSMP Screen Font Properties shall be changed.

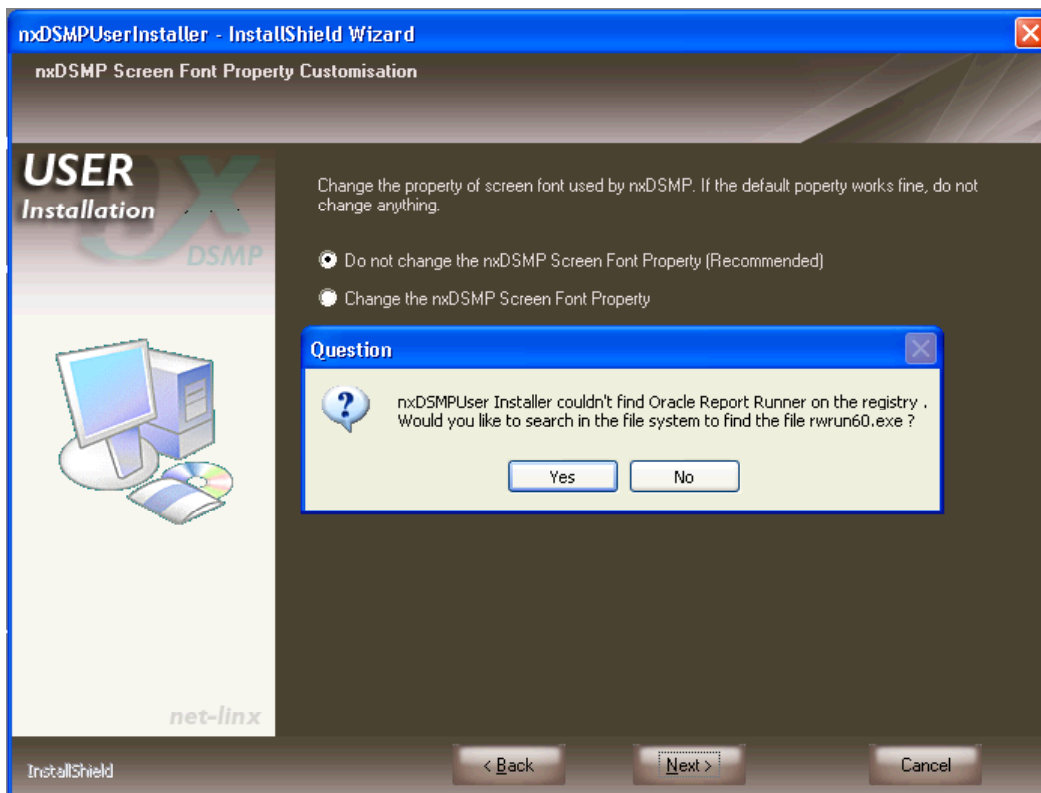
Make your decision by clicking on one of the two radio buttons and continue by click on button Next.

If the user decided to change the nxDSMP Screen Font Properties the following screen appears.

The user can change the font name to be used for screen labels and fields and can change field and label height and width within the allowed boundaries.



Continue by click on button Next.



This above screen is only valid for customers who use Oracle Reports Runtime if the automatic background check for Oracle Reports Runtime is not successful.

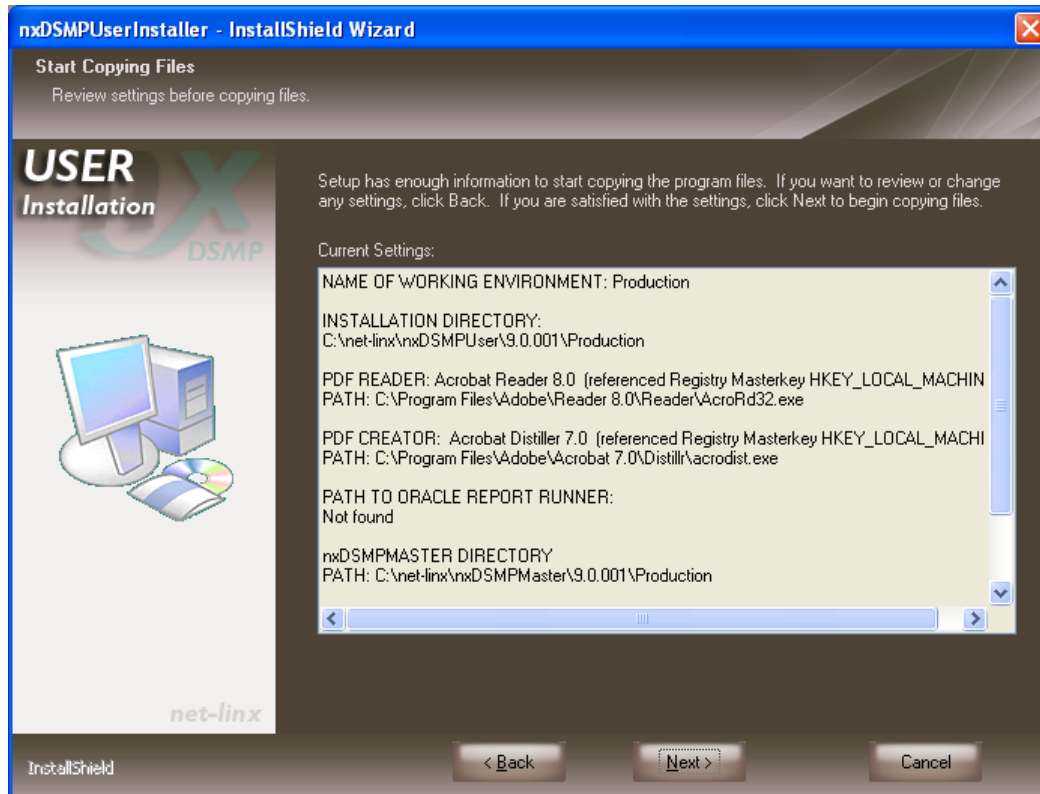
This automatic background check works as follow:

To first the installer checks for availability of Oracle Reports Runtime 10g. If the result true then the installer will set the path for nx_ORAREPORT to the Oracle Reports Runtime 10g executable (rwrn.exe).

If the result false then the installer will check the availability of Oracle Reports Runtime 6i. If this result true then the installer will set the path for nx_ORAREPORT to the Oracle Reports Runtime 6i executable (rwrun60.exe).

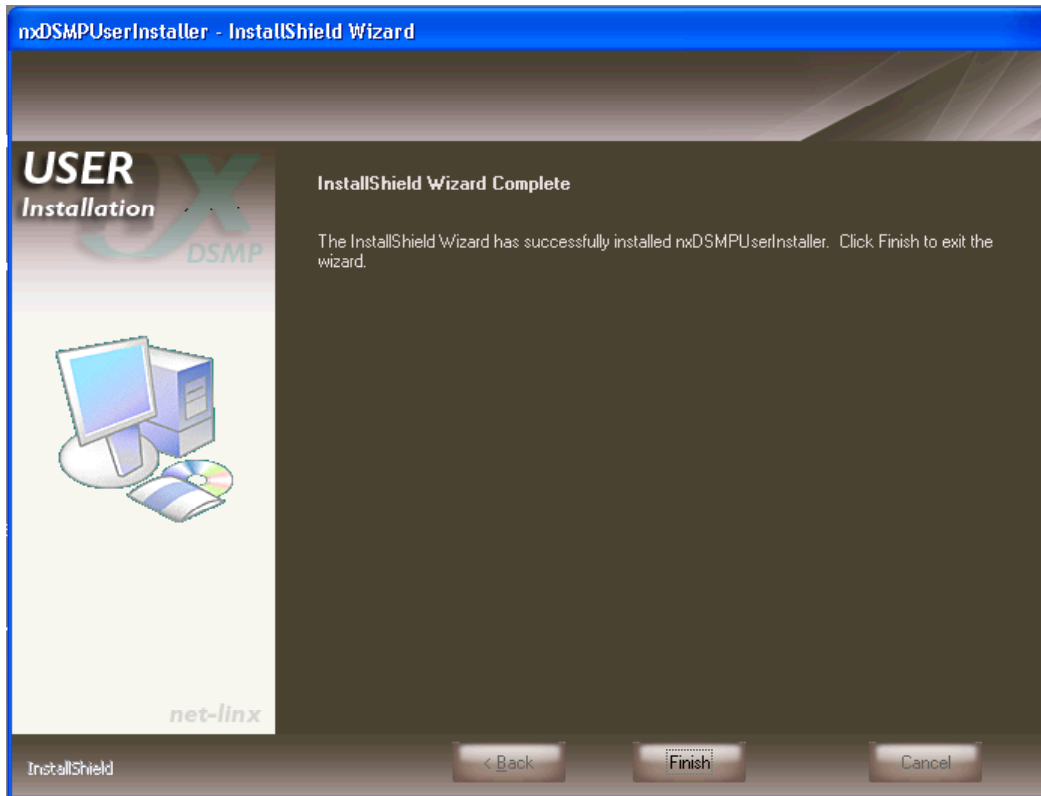
If the result false the message box will appear. The user should click button Yes to locate the Oracle Reports Runtime of the Oracle Reports Runtime (10g or 6i) installation.

Then the following will be presented.



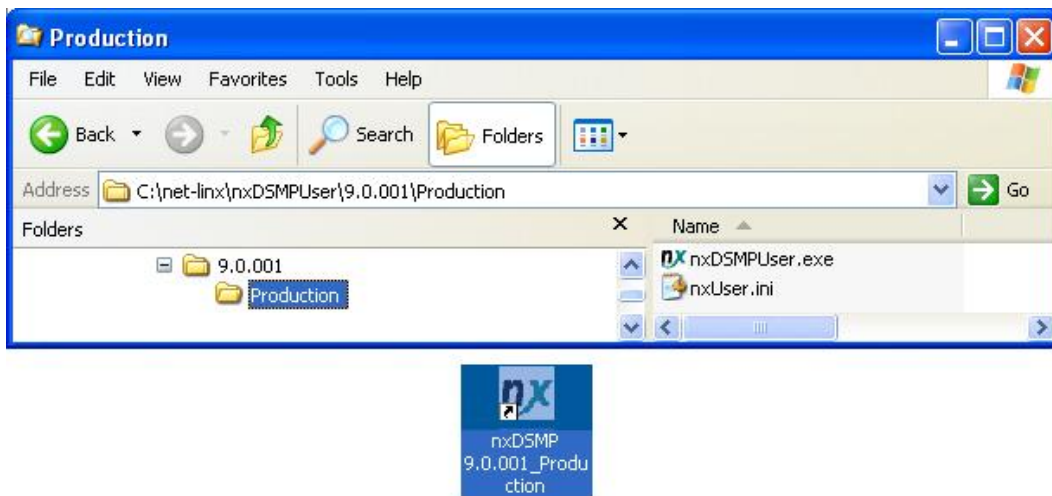
This screen shows you the current settings you have chosen. You can either go backwards by click on button Back to modify your Current Settings or continue with the user installation by click on button Next.

The installation will be executed. Then the following screen will be shown.

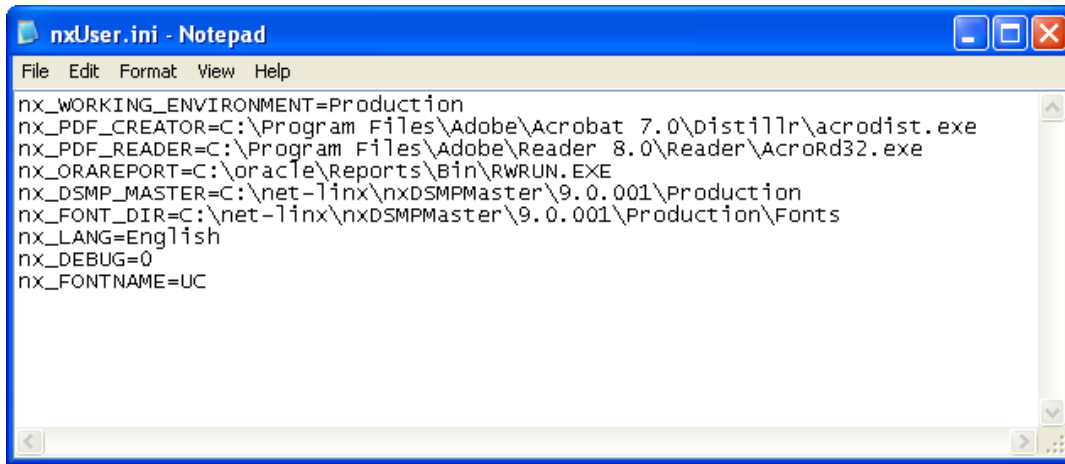


By click on button Finish you confirm that the user installation shall be completed.

The result of your installation will look like this:



The file nxUser.ini can contain the following settings:



The user can now launch the nxDSMP application by double-clicking on nxDSMPUser.exe or the short-cut nxDSMP.

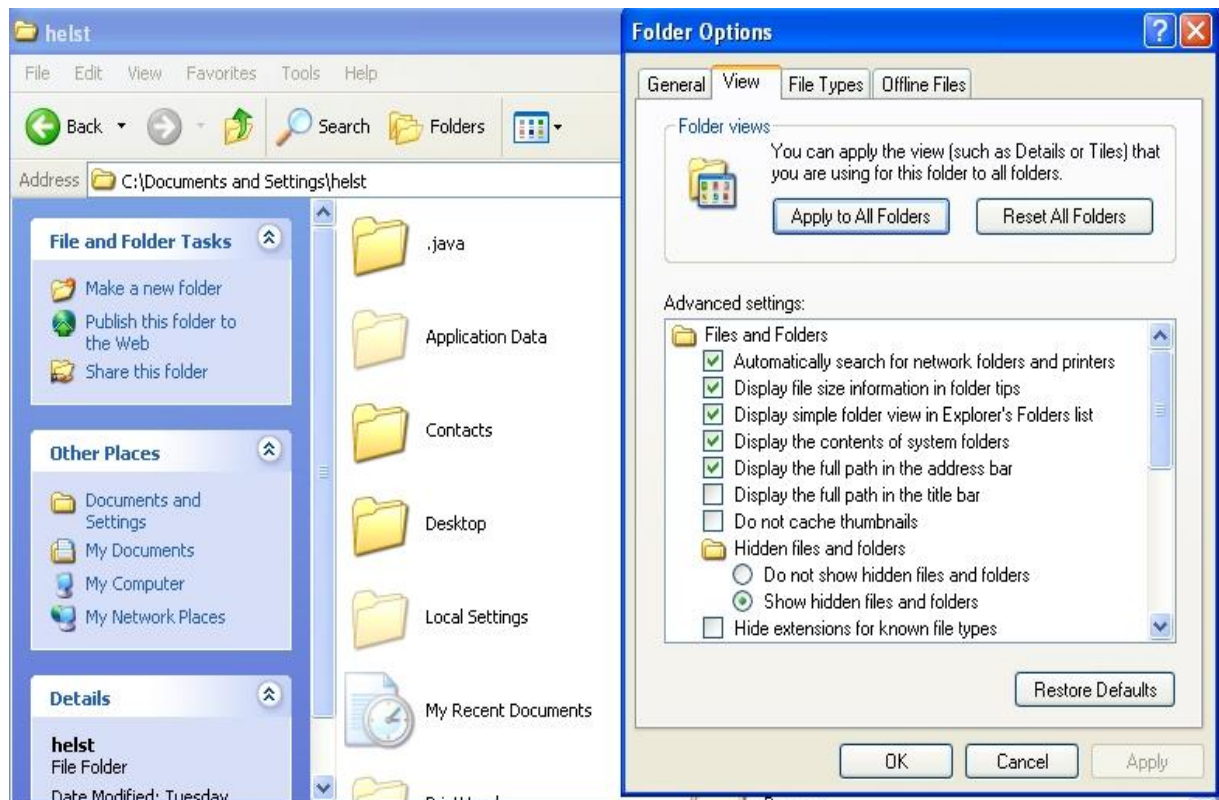
After double-clicking on nxDSMPUser.exe or the shortcut **nxDSMPx.x.xxx_WorkingEnvironmentName**

the user environment will be created on the users folder:

%APPDATA%\net-linx\nxDSMP\YourWorkingEnvironmentName

In this example case: **%APPDATA%\net-linx\nxDSMP\Production.**

The **%APPDATA%** folder is a hidden folder (for english version of Windows XP 'Application Data'). To show this folder, change the folder option to "Show hidden files and folders."



On this folder you can find the follow sub directories.

ds\External Program

ds\PsPath

logarc.

The directory logarc included the start log files for each nxDSMP run.

Log files older then 60 days will be delete with the start of nxDSMPUser.exe.

For further information regarding '**nxDSMPUser.exe**' and '**nxUser.ini**' read the nxDSMP User Program Documentation.

Remove nxDSMPMaster/User Installation

To remove the nxDSMPMaster Installation or the nxDSMPUser Installation use the 'Add or Remove Programs' Tool on the Control Panel. This Tool removes only Folder and files installed by the nxDSMPMaster/User Installer. User data on the users

%APPDATA%\net-linx\nxDSMP\YourWorkingEnvironmentName

will not be lost.

Font Directory in nxDSMP

The Oracle database of nxDSMP includes the table SystemFont. The names in the field SystemFont.FontMetric have to match the names of the font metric (.afm) files. The font metric file includes metric information for all characters of a font including kerning information. The font metric files have to be located in the Fonts subfolder of an nxDSMP installation path.

Preview Functionality

Distiller must have access to all necessary fonts in order to function properly. To set this up, start Distiller and go the font settings menu item (select **Settings, Font Locations**). Then specify the location of the font directory or directories. The .pfb and .pfm files have to be located in that directory. A copy of the .pfb files must also be located in the nxDSMP Fonts directory.

Ad Preview must have the environment variable CMAP_PATH defined if CID fonts are being used. The environment variable CMAP_PATH must point to the CMAP directory that Distiller creates when including CID font support (such as for Chinese, Japanese, or Korean fonts). If CID fonts are not needed, which means that double byte characters are not being used, the CMAP_PATH variable is not required.

Online Help Files

After the installation of the nxDSMP application the online help files are included in the directory Help on the nxDSMPMaster machine. You can launch this online help directly from the nxDSMP application. A precondition is that the Help Viewer (hh.exe) is on your machine. The Help Viewer (hh.exe) is part of the Microsoft Windows Installation.

Oracle Reports

Only for customers who use Oracle Reports. After installation of the nxDSMP application Oracle Report files for Oracle Reports Runtime 6i will provided on the folder **DSMP_Reports**. If the installer includes the Oracle Reports for Oracle Reports Runtime 10g too, this Oracle Report files will provided on the folder **DSMP_Reports10g**. Dependent from the version of Oracle Reports Runtime indicated with the nx_ORAREPORT variable on the nxUser.ini the corresponding folder will be in use.

ICE with nxDSMP

Font Directory in ICE

You must ensure that the appropriate font files are correctly installed. ICE requires that both the .AFM (subfolder: FontResources/Font/Afm of your nxICE installation folder) and the .TTF (subfolder: FontResources/Font/TrueTypeFonts) of each font are stored in the mentioned sub-folders to correctly display ads in WYSIWIG format. As fonts are likely to vary from one client to the next, maintenance of font files is ultimately the responsibility of the client. The True Type fonts have to be installed properly on the local PC in your system's font folder. This folder can be accessed through the Start menu.

For further information see the ICE Release Notes in the ICE folder installed after running nxDSMP setup.